

# DRY LAYERED ANALYSIS

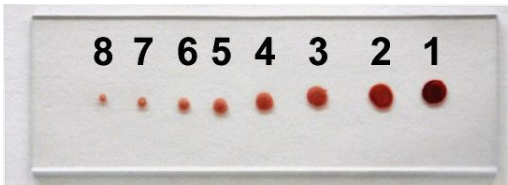
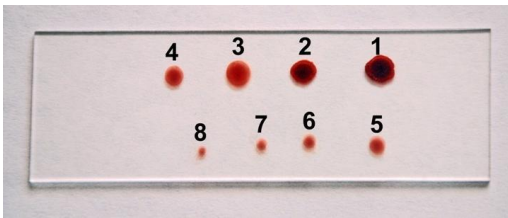
## (Oxidative Stress Test)

"The doctor of the future will give no drugs, but will interest patients in the care of the human frame, in diet, and in the cause and prevention of disease."

-- Thomas Edison --

### LAYERS

**NOTE:** Each drop is called a "layer".



**Layers:** This is the term referring to each of the blood dots on the slide. The first and largest dot is Layer 1, and the last and smallest dot is Layer 8.

\*The larger the layer, the more it is related to readings on situations that are shallow, temporary, and acute problems.

\*Readings on the smaller layers are generally related to more deep seated, long term or chronic situations.

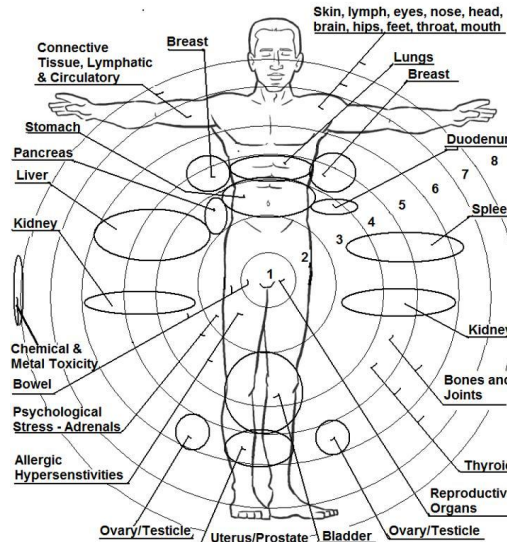
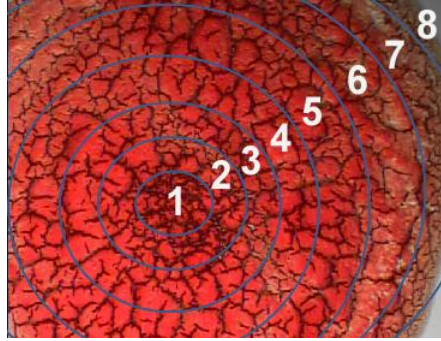
**Layers 1 and 2** (the first layers) relate more to the condition on the outside of the body such as skin, lymph, eyes, ears, nose, throat, mouth, brain, hips and feet. These conditions may have been present for a shorter duration.

**Layers 3, 4 and 5** give more accuracy regarding lung, breast, lymphatic and hormone conditions. These conditions have been present for a longer period of time than those found in layers 1 and 2.

**Layers 6, 7 and 8** are more accurate for sex organs, kidneys, liver, spleen, gall bladder, pancreas, stomach, stress, allergic sensitivities. These layers represent more accuracy with

conditions that are well established, chronic and long term conditions.

## RINGS



**Ring:** This is the term referring to concentric circles in the layer (like on a target) that coincide with different parts of the body. For example, **Ring 1** is in the centre of *each layer*, and **Ring 8** is on the outside of the circle (the largest ring) of *each layer*. Ring 8 represents the outside of the body (skin) and each inward ring moves progressively in to the inside of the body (bowel, sex organs, etc...).

**Ring 1** (centre) represents reproductive organs, ovaries and prostate. In men, this would be related to prostate and bladder. In women, patterns here are related to uterus, ovaries, cervix, hysterectomy, fibrotic conditions, bleeding and vaginal problems. **PPPs** found in Layer 1 only and Ring 1 in a woman could be due to menstrual period.

**Ring 2 and 3** show allergic hypersensitivities. Colon issues that show up may relate to impaction, constipation or irregular bowel movements. Adrenal and psychological issues may show as tiny PPP's.

**Rings 3, 4 & 5** relate to the vital organs such as kidney, liver, gall bladder, spleen, bladder, stomach, colon, and digestion issues. Liver problems could be related to liver detoxification, stress or plugged ducts. Gall bladder could be related to low bile salts, gallstones or if the gall bladder has been removed. Digestive insufficiency especially protein, could also show up. Intestinal and pancreatic problem would also appear in these rings. Stomach ulcers, gas and bloating could also be present. Bone and joint issues may show in these rings.

**Ring 4** relates mainly to lung or breast issues. Possible lung problems could be congestion, flu, chronic bronchitis, smoker (or was a smoker in the past) or secondary smoke. Breast issues could relate to breast tenderness, cysts, fibroids, lumps or problems with implants.

When **PPPs** occur only on one side of the layer, the indication is that one lung or one breast are involved.

**Ring 5** may show localized **PPPs** which relates to lymph nodes, lymph or edema. Need exercise, lymphatic massage, lots of fluids, raw fruit and vegetables. This could also be related to water retention or toxic kidneys. This ring can also relate to lung, breast and hormone conditions. Bone and joint issues may show in these rings.

**Ring 4, 5 and 6** relates to Thyroid and Parathyroid conditions.

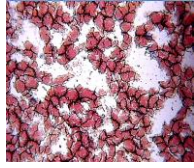
**Rings 6, 7 and 8 PPPs** relate to the condition of the outside of the body such as skin, lymph, eyes, nose, throat, mouth, head, brain, hips, and feet. **Ring 6 and 7** mainly relate to the connective tissues (mesenchyme) and the lymphatic and circulatory systems. May see bumps on the edge that indicate head and neck injuries. Chemical toxins and metal toxicity also shows up in this ring as a dark shadow or wave at the edge of the ring. Toxicity could be due to inadequate exercising. May need to get the heart rate up through aerobic exercise, go to a sauna, have a hot bath or something else that will open the pores and eliminate toxins.

Physical or emotional stress may show up as skin problems. Localized **PPPs** to this ring could also be due to dental factors such as crowns, fillings, dentures, etc. There could also be metals in the fatty tissue cells. Metal toxins could also be due to cigarette smoke, second hand smoke, household chemicals, air

pollution (air fresheners, perfumes, gas, smog, etc.). Marijuana use may also show up in these rings. "Scatterness" on the edge of **Ring 8** may be due to poor absorption of nutrients.

### HEALTHY BLOOD

### FREE RADICAL DAMAGE



**If areas of white or unusual black areas are observed in the dried blood sample, this may denote Free Radical Damage, Toxicity and/or Congestion.**

## PPP's or ROTS

Ppp's are "Polymerized Protein Puddles". They may also be called ROTS which are "Reactive Oxygen Toxic Species". They may appear as white dots, lakes, or rivers, and are the expression of Free Radical activity and clogged, toxic lymphatics. They are soft clots made from polymerized proteins and caused by the effects of excess hydrogen peroxide. The deeper the layer, the more chronic are all conditions.

### PPP SIZE DESCRIPTIONS

- **2 micron sizes** that are disbursed throughout the sample indicate possible allergic sensitivities and are related to hypersensitivities and allergic reactions.

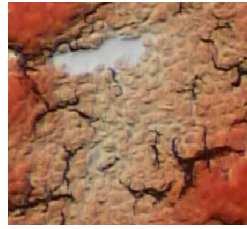
- **30 microns (more or less)** are related to physical stress, emotional stress, mental strain and physical strain. May be seen primarily in Rings 1, 2 & 3. (deeper layers are more chronic)

- **40+ microns** are related to degenerative conditions (except round and clear ppp's). The larger the ppp's and the greater numbers, the more serious the condition.

- The larger the ppp's the more degenerative and toxic is the individual.
- PPP's in the centre of first few layers but not in the deeper layers can indicate a problem with the connective tissue between the bowels.

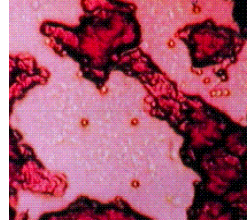
## PPP SHAPES AND APPEARANCE

**Note:** The "red" descriptions have no pictures at the moment.



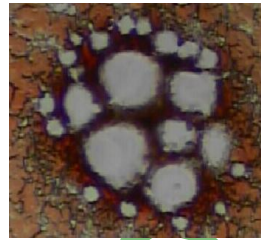
**1) Cells filling back from the shore of ppp lakes into the center of lakes:**

- Sign of healing and improvement.
- Effective treatments.



**2) Red cells out in centre of ppp's:**

- Inflammation, irritation, soreness, swelling.



**3) Round and clear large ppp's are indicative of:**

- Inflammation, soreness, swelling. (see number 5)

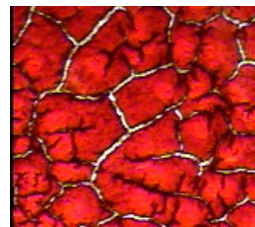
\*It is more chronic if it is surrounded by black. (see number 4)

**4) White ppp's with black halos encircling them may signify:**

- (no picture - see picture in number 3)
- Liver stress – detoxing or systemic toxicity.

**5) Bright orange or red areas seen around ppp's may represent:**

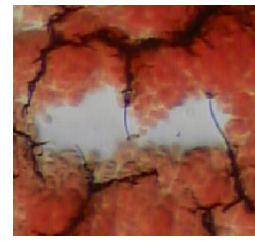
- (no picture - see picture in number 3)
- Inflammation, irritation, soreness, swelling.
- Red may signify internal bleeding – urine and stool may show blood presence.



**6) Thin chains of white ppp's inside black fibrin:**

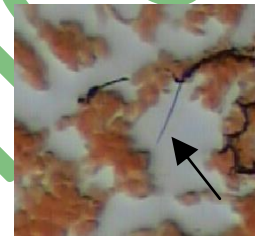
- Restricted lymph drainage, congestion, sludge.

- Edema, swelling.
- Needing Trace Minerals.



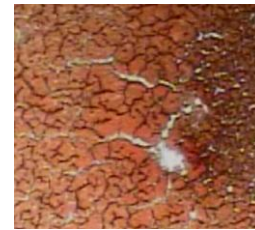
**7) Viral indications "Bridges across ppp's"**

- In the case of viral infections, the fibrin net will be in the ppp's and appear like bridges (black fibrin lines traversing ppp's). This is termed "viral spiking". Two viruses that are intense enough to cause bridges across the ppp's are Epstein Barr and Human Herpes strains. **Symptoms:** low oxygenation, fatigue, chronic fatigue, EB Virus?



**8) Spikes or spicule needle network visible in white ppp's:**

- Liver stress – Hepatitis infections? Toxins?



**9) Narrow and elongated, bent, curved or lying askew ppp's may signify:**

- Viral activity or chronic fatigue (low oxygenation)

**10) Localized ppp's in a particular area (not throughout) indicate (no picture):**

- Localization of the problem in the body, rather than systemic conditions.
- \*See the rings chart for location in the body.

**11) Total disbursement of very small ppp's (2 micron) in all rings may show the following (no picture):**

- Possible allergic sensitivities to food (especially wheat, dairy and gluten).
- Possible allergic sensitivities to inhalants in the home or workplace. **Inhalants:** mold, cat and dog fur and dander, dust and dust mites, pollens, perfumes, exhaust fumes, formaldehyde (which is constantly exuded from building materials and furniture), carpet, new clothing, etc...

- Food: dairy, wheat, gluten, drugs, medications, etc...
- Stress from lack of sleep, overwork, overtired, emotional factors, physical strain, and anxiety.
- Stress related to mental worry, loneliness, anger, fear, sorrow, grief, guilt, nonacceptance, or denial.

\***Allergies** are similar to the stress type ppp's, but they are smaller and like a snowstorm. This condition often accompanies dark fibrin because some of the ppp's are a result of food allergies and certainly digestive insufficiency. Wrong food combining will also generate both of these pictures.

\***Psychological stress** shows up as relatively small white ppp's scattered through the middle of the last few drops. This is from free radical activity which is generated by the drug-like effects of the stress based internal endocrine chemistry. This is an acidic condition which strips minerals from the body, etc.. This is a lower, degenerative chemistry which is analogous with fear based survival reactions, over activity, worry, concerns, emotional turmoil in relationships and possibly other deep seated stressors such as hidden sexual abuse victim history.

**The following conditions are more widespread, systemic or metastatic (the spread of a disease from one organ or part to another non-adjacent organ or part).**

**12) Large, wide and linked ppp's (interconnected), with appearance as "lakes", are indicative of degenerative disease conditions, free-radicals & toxins (no picture):**

- Chronic or accumulated toxicity
- High Free Radical Activity from stress and toxins (from food and environment)
- Systemic infection, systemic circulatory insufficiency
- Collagen diseases
- Advanced systemic degenerative condition indications such as: Cancer, Arthritis or inflammatory indications which are widespread or systemic with metastases (started in one area and has spread to other areas).

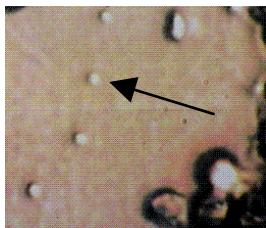
**13) Total disbursement of large ppp's in all rings may show the following (no picture):**

- Chronic or accumulated toxicity
- Strong free radical activity
- Advanced systemic degenerative conditions

- Possibility of Cancer, Arthritis or inflammatory indications which are widespread or systemic with metastases (started in one area and has spread to other areas).

**14) Large sized ppp's, with appearance of "lakes" containing grey dots may indicate (no picture):**

- Cancer or the beginning stages of Cancer



**15) Sialic acid round beads stuck out in white ppp's:**

- Degenerative disease indications – free radicals & toxins.
- \*Cancer indications are more widespread, systemic, metastasis.

**16) Green tinge around edges of ppp's or over fibrin (no picture):**

- Degenerative disease indications – free radicals & toxins.
- \*Cancer indications are more widespread, systemic, metastasis.



**17) Broken blood cell tissue or exploded cells (Heinz Bodies) like "pepper", lying out in center of ppp's:**

- Degenerative disease indications – free radicals & toxins.
- \*Cancer indications are more widespread, systemic, metastasis.

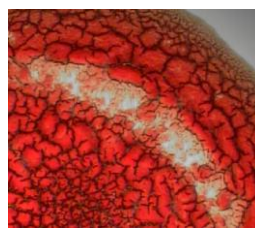
\***Heinz Bodies** are black spots the same size as RBC's inside the white areas of the ppp's are termed Heinz Bodies. They are composed of polymerized haemoglobin which has been oxidized by hydrogen peroxide. If 10 or more are observed in any one ppp, cross correlate with checking for spindle threads (chondrits) in the live blood sample to determine whether this may be related to tumors. Look for filaments and threadlike forms. If you pressurize the coverslip under the microscope lens and these forms appear immediately, then suggest that they look into oncological and other types of testing. This will only tell them if they are in an advanced stage of disease. Either way, a

program of nutritional and biological support is necessary. This program may override these immediate Heinz body pictures in the ppp's, as it changes the related blood chemistry. This does not necessarily mean that the condition is reversed. Therefore the proper program should be maintained. Emphasis should be on lasting lifestyle changes rather than only a therapeutic approach. Tumors in remission will continue to produce ppp lakes, but they will look like shrinking lakes with a light area around them outlining their former size. The Heinz bodies will be fewer.



**18) Crystal-like broken glass seen inside the ppp's are often seen in these situations:**

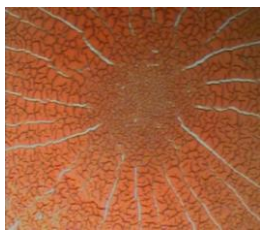
- Arthritis, gout (uric acid build-up), sore joints, collagen diseases, systemic circulatory insufficiency.
- Bacterial infections and/or parasites.
- May signify secondary effects or free radical activity if organs aren't functioning properly (IE: ammonia from the liver, uric acid from the kidneys, etc...)



**19) Arthritis**

• Shows up as the presence of elongated white masses. These are generated by the presence of uric and citric acid by-products. Arthritis is often associated with circulatory problems, mycoses (fungal conditions), wrong types of protein for blood type or undigested protein, and consumption of indigestible or unabsorbed Calcium. The fungal conditions can leave waste by-products in the joints. Some are helped symptomatically by shark cartilage and N-Acetyl Glucosamine. A full detoxification and drainage program designed to address the underlying problems is in order.

\*Check the Live Blood for fungal conditions, which are related to all connective tissue disorders.



**20) PPP's that appear as bicycle radial spokes radiating out – Relates to:**

- An altered pH or acidic terrain causing minerals to leach out.
- Electrolyte imbalance, calcium/phosphate ratio is off, cell's NaK (sodium/potassium) pumps are inefficient.
- Thyroid or parathyroid dysfunction due to their function in utilizing Calcium.

**NOTE:** When there is acidosis the bones will release Calcium as a compensating mechanism to buffer acids and thereby balance pH. The calcium spokes indicate pH imbalance. This may lead to **Osteoporosis**, which may show as white elongated ppp's in the bone area and extending into the lymphatic ring. (Rings 4-6)

## OTHER ANOMALIES



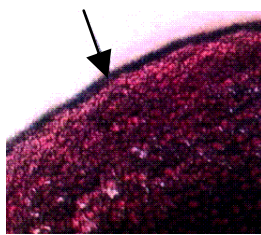
**21) Outer Cell Adhesion is Poor (Ring 8) – Represents:**

- A low diet or poor absorption of Vitamin C, Bioflavonoids and/or Sulfur based Amino Acids. Eliminating excess toxic build up will help improve absorption.
- Possible emotional stress causing the body to “hold on” to excess toxins.



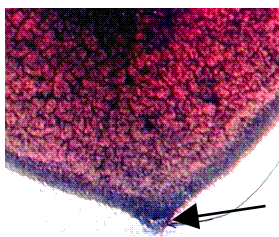
**22) Double Coast on periphery – Represents:**

- Blocked pores from not sweating enough.
- Skin conditions
- Possible dehydration
- May be low alkaline buffers including sodium bicarbonate and minerals.
- Spiritual disconnection?



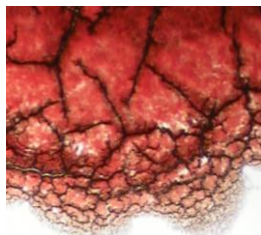
**23) Thick Darkened Fibrin Ring around Periphery – Relates to:**

- Heavy Metals from: exposure to various chemicals from food or the environment (air fresheners, cleaning products, cosmetics, etc...), silver (mercury) fillings, bridges, crowns, cigarettes, water pipes, cookware, smog, marijuana, table salt, vaccinations, “acid music”, etc... **Symptoms:** Metal toxicity accumulates in fatty tissue, especially in the CNS (central nervous system) – nerve cells, spine, brain – which may lead to MS, Alzheimer's, Parkinson's, etc... **First signs may be:** slower reactions, muddled thinking, forgetfulness, etc...



**24) Heavy metals spinning out of periphery. Sometimes called a “Lead Bullet”.**

- Heavy metals “spinning” out to the edge. (See #24 for possible sources) Lead can be from copper pipes during drug use or leaded gas exposure if the person has traveled to another country. **Symptoms:** Related to the head and brain: neurotransmitter dysfunction, depression, lethargy, inner ear or labyrinth involvement, memory dysfunction, headaches.



**25) Periphery Protrusions or Bulges on the Coast (outside Ring 8) – Represents:**

- Outer periphery shows symptoms relating to the outer extremities of the body (head, neck, arms, hands, shoulders, hips, legs, knees, and feet). Area of sample shows part of body.

**Ex: Top part of ring represents:**

- Head region – brain & inner ear
- May represent head and neck injuries.
- Often indicates toxic root canal.

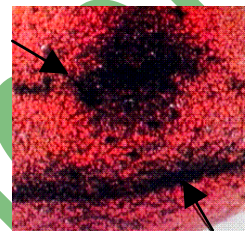
- Neurotransmitter dysfunction may show up as toxic heavy metals “spinning” to outside ring. (See #24).

**26) Grayish Waves coming out to the edges from center (no picture) – Relates to:**

- Metal accumulations in the body's fatty tissue: brain, spine and central nervous system CNS.

\*This may be a sign of Alzheimer's, Parkinson's, MS, etc...

**Symptoms:** Alzheimer's, MS, muddled thinking, slower reactions, forgetfulness, Parkinson's.



**27) Darkened waves of fibrin, not necessarily around the periphery, but inside the specimen itself, can denote:**

- Heavy metal toxicity

**28) Lymphatic Congestion – appears as white scattered in Rings 6 & 7 (especially in layer 1 & 2) (no picture)– Represent:**

- Congestion of the lymphatic system due to inactivity. Congestion is mainly in lungs and breast area.
- Poor digestion of food proteins.

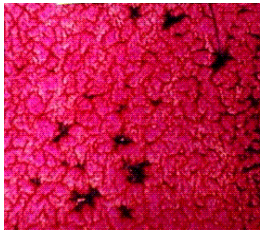
**NOTE:** Stretching, walking, exercises and doing light weights will help increase lymphatic circulation. Drinking more water and supplementing with Digestive Enzymes, HCL, B-Vitamins and Trace Minerals may also help. Other things that help include: Lymphatic massage, jumping or bouncing (trampoline) and Lymphatic Drainage remedies.

**29) Localized PPP's in the Lymphatic Rings (6 & 7) (no picture) – may represent:**

- Head: Headaches, migraines, nose/sinus drainage, infection, flu, cold, plugged up.
- Head: Concussion, head-bang injury, knocked out. Forceps delivery (during birth).
- Throat: Sore, swollen tonsils, trouble breathing, cough, phlegm.
- Eyes: Weep, blurr, sting, dry, dark circles under, cataracts.
- Ears: Ringing, loss of balance, itchy, dizzy, wax, hard of hearing.
- Mouth: Sores, bleeding gums, bad breath, don't floss, abscess.
- TMJ disorders (Temporomandibular joint disorder - the joint where the mandible (the

lower jaw) joins the temporal bone of the skull, immediately in front of the ear on each side of your head): Muddled thinking, slower reactions, more forgetful, Parkinsons.

- Feet: Corns, swelling, numb, pain, hot, arches, sores, weird nails.
- Hips/Pelvis: Sore, pushed forward on one side, one leg shorter.



**30) Dark Fibrin Bulging out or Brown/Tanned area. Represents:**

- Parasitic and/or Fungal, Yeast or Candida infections.

\*Toxic build up may cause the above.

**Symptoms:** Malabsorption of B12, Folic Acid, fat soluble A & E vitamins. Bloating & gaz. Parasites may cause weight loss, deteriorating muscles, too thin, can't gain weight.

**NOTE:** Optimizing digestive function is essential for minimizing susceptibility to parasites. Probiotics, Minerals, B-Vitamins, HCL, enzymes and herbs will enhance a strong digestive tract. Balancing the body nutritionally and supplementing with Probiotics will minimize yeast and fungus overgrowth.



**31) Fibrin Interconnection is poor or appears "broken" (not connecting right) – Represents:**

- Imbalance with the Glandular system:
  - Hormonal imbalance from: high stress hormone levels, hormonal changes, thyroid out of balance, weight management problems, prostate issues, etc...

**NOTE:** Supplementing with Vitamin E, Selenium, Zinc and good "fats" can help with this.

○ **Thyroid situations show up as:**

Non-continuity in the fibrin net or poor interconnection, especially in the last 2 or 3 layers. Small areas which are devoid of fibrin lines are termed "thyroid smears"

**Symptoms:** Cold hands/cold feet, weight or hormonal changes, low or deficient in minerals, low pH (acidic), ulcers, heartburn, susceptible to disease.

**NOTE:** Supplementing with Kelp is highly recommended for Thyroid conditions. It is a great source of Iodine, which is needed for

Thyroid function. It also contains naturally-occurring amounts of calcium, iodine, magnesium, manganese, potassium, selenium, silicon, sodium, numerous B-Complex vitamins, and vitamins A, D, E and K.

○ **Blood sugar imbalances may lead to:**

Weak pancreas, hypoglycaemia or sugar intolerance due to high carb/sugar diet.

**NOTE:** Need to eat more green vegetables.

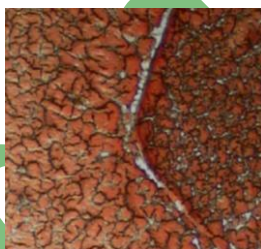
Supplementing with minerals such as Chromium and Zinc is essential because they act as co-factors with enzyme function in sugar metabolism.



**32) Fibrin Concentration is Low – Represents:**

- Poor digestion and absorption of food proteins.
- Pancreas dysfunction
- Malabsorption of other nutrients.

**NOTE:** Supplementing with B-Vitamins, enzymes with HCL and minerals will help with this.



**33) Long and straight or crooked wavy strands of black or white fibrin can mean:**

- Back/neck/shoulders – sore, numb, pinched nerves, spine curved.
- Whiplash from accident? Stiff back, neck and shoulders?
- Scoliosis? Lumbar Dorsal? Tendonitis?

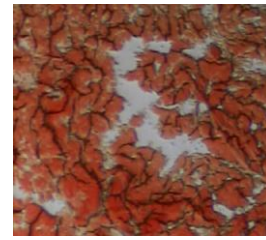
**NOTE:** Stretching and light weights will help to balance this out. May be due to previous injury, posture, stress, malabsorption, nutritional deficiencies, etc...



**34) "Lines" that cross fibrin and may be "lighter in color or appear "raised" can signify:**

- Organ stress if seen in area of specific organ and taking into account other blood anomalies. Stress causes pinched nerves in organs or tissues. **Causes:** Stress due to

emotional state, toxicity, infections, inflammation, injury or exercising, etc...



**35) Wandering rivers cutting across fibrin network:**

- Poor circulation or oxygenation.
- Cold hands and feet? Low energy?
- Not exercising enough? Need to sweat and get heart rate up.

**36) Misty cloud-like RBC areas against a broken fibrin network:**

- Dysfunctional pancreas may cause: sugar intolerance, diabetes or hypoglycaemic.

- DIC (Disseminated intravascular coagulation)

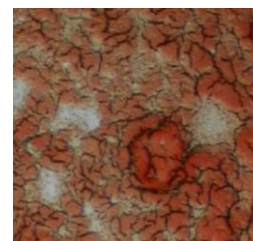
**NOTE:** Supplementing with minerals such as Chromium, Selenium and Zinc is essential because they act as co-factors with enzyme function in sugar metabolism.



**37) Lighter color of red inside fibrin network may signify:**

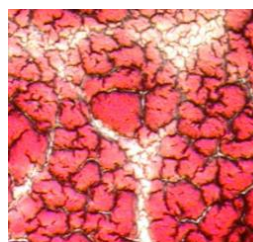
- Anemia – low iron, poor assimilation (malabsorption)

**Symptoms:** low energy, tired



**38) If an area in the fibrin appears circular, erased and raised and is either darker or lighter in color, then it can signify:**

- If seen in Ring 4: Heart situations –high blood pressure, low blood pressure, clogged arteries, bulging veins, plaque, high triglyceride, valves, arrhythmia.
- Mineral deficiencies such as Magnesium and Potassium.



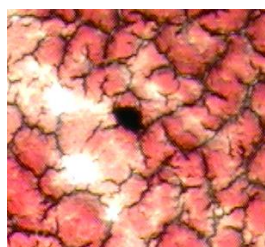
**39) Un-erased fibrin in whitened or different colored area may signify:**

- Muscles – sore, shrinking, getting flabby? Losing strength?
- Legs – numb, rubbery, losing muscle size/length, in pain.
- Myocytis (chronic fatigue syndrome), fatigue



**40) Pinkish or light colours in elongated and erased fibrin area (especially in Rings 3-5) – Represents:**

- Thyroid or parathyroid is out of balance
- Hormonal imbalance (Endocrine/Glandular)



**41) The presence of necrotic (dying) tissue may be indicated by black, unraised areas of concentration and can appear anywhere in the samples:**

- Liver stress – from being too toxic or detoxifying too quickly.



**42) “Fish Eyes”**

- Symbolizes an imbalance in the biological terrain (internal environment of the body – Ex:pH) causing inflammation and possible viral activity.



**43) 1 or 2 large PPP's anywhere in rings 2-6 – May represents:**

- May be related to weak kidneys, bladder and spleen (especially if the individual is a pot smoker).
- Gall bladder: stones, bile salt problems (low bile salts), low UFA's (unesterified fatty acids) or gallbladder is removed?
- May be due to liver stress due to detoxification or plugged bile ducts.

- Also seen in stomach situations, such as ulcers, acid reflux, indigestion, rumbling, gas, and bloating.
- Colon and intestine problems: packed with impacted pockets, constipation, poor protein digestion.
- Pancreas not functioning properly.

**44) PPP's of 90 microns in diameter scattered in rings 2-6 – may represent:**

- Cysts, lumps, fibrous areas, cellulite.
- Kidney or gallbladder stones, low bile salt, low UFA's, removed gallbladder.
- Rectal haemorrhoids, soreness, fissures, bleeding.
- Undissolved gravel, accumulated toxins, drugs or medications.
- Allergic reactions and hypersensitivities, including allergies to foods, inhalents, mold, cat or dog fur and dander, pollens, perfumes, auto exhaust, “sick” buildings, formaldehyde, etc....
- May indicate eye problems such as blurring, stinging, dry, have dark circles under them or around them, appearance of cataracts.

**45) Off center cluster ppp's of 100+ microns in size – Represents:**

- pH imbalance
- Kidneys weak, often the spleen and bladder also.
- May be related to marijuana use.
- Liver detoxification, liver stress, plugged ducts.
- Gall bladder situations: low bile salt, gallstones, gall bladder has been removed.
- Colon problems: Impaction, constipation, irregular bowel movements.
- Digestive insufficiency, especially protein.
- Intestinal and pancreatic problems.
- Stomach problems, ulcers, acid stomach, rumbling, gas, bloating.

**46) PPP's of 30 microns (more or less) anywhere in rings 2-6 – May represent:**

- Physical stress, emotional stress, mental strain and physical strain. May be seen primarily in Rings 1, 2 & 3. (deeper layers are more chronic).



**47) Dark Centre Area – Represents:**

- Bowel toxicity due to malabsorption or poor digestion (not chewing properly?).
- Low UFA's (unsaturated fatty acids), pancreas dysfunction, large bowel dysfunction.
- May also be caused from stress or lack of enzymes or HCL. May also be due to other digestive insufficiencies.

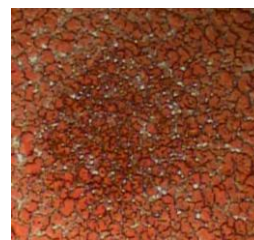
**48) Dark Centre Area with 3 or more Large Round ppp's – Represents: (see picture in number 3)**

- A degenerative condition due to pH imbalance and toxicity.
- Bowel toxicity and inflammation.
- Possible pockets in intestine from accumulated fecal matter.
- Poor or irregular bowel elimination (constipation, IBS, Chron's, Celiac).
- Poor digestion with gas, pain or bloating (leaky gut).



**49) Center - 1 or 2 Large “Round & Clear” ppp's – Represents:**

- Problems with the reproductive organs:
  - **In men**, this may mean prostate problems (IE: enlarged prostate) – only if there are other signs of this such as a pressing bladder and frequent urination.
  - **In women**, this can be related to the uterus, ovaries, cervix, hysterectomy, hormonal imbalance, fibrous conditions, bleeding, vaginal situations or any dysfunction in the reproductive area (such as Endometriosis).
- Emotional imbalances.



**50) Center with Small ppp's (snowstorm) - May represent:**

- Adrenal stress, from lack of sleep, overwork, overtired, emotional factors, physical strain, and anxiety.
- Stress related to mental worry, loneliness, anger, fear, sorrow, grief, guilt, non-acceptance, or denial. Possible allergic

sensitivities to food (especially wheat, dairy and gluten), drugs or medications.

- Possible allergic sensitivities to inhalants in the home or workplace. Ex: mold, pets, dust and dust mites, pollens, perfumes, exhaust fumes, carpet, formaldehyde (which is constantly exuded from building materials and furniture), new clothing, etc...

**Healing suggestion:** Vitamin B-Complex with B5 and B6 in combination with 2000 mg Vitamin C to rebuild system.



**51) Center with Small PPP's (2 microns) and sparse 30 micron PPP's.**

- May be related to adrenal insufficiency (burnt out adrenals), exhaustion, less ability to bounce back, less drive or spunk.
- Depression, listlessness, aimlessness, a tendency to give up easily.

## **SYMPTOMS OF DISEASE**

Our disease symptoms are simply an imbalance between: our emotional state, our bio-chemical composition and our physical structure.

- We have the ability to improve our emotions with positive thoughts and affirmations.
- We have the ability to improve our bio-chemical composition through a nutritious diet, avoiding food we are intolerant to and eating according to our Metabolic Type.
- We have the ability to improve our physical structure through movement and exercise.

Feel free to ask us questions anytime.  
Our goal is to support you on your  
“health journey”.

This information is for health education only and is not intended to be used for any form of diagnosis, analysis, assessment, assay or clinical test.

© 2009 Balanced Concepts Ltd.